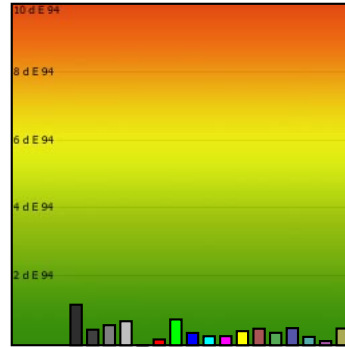
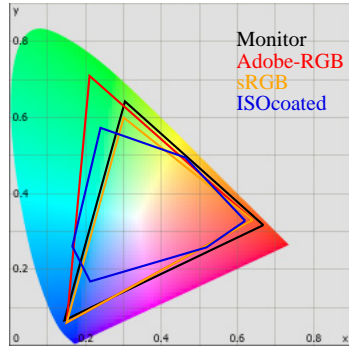


Monitor Calibration Report

Date: 2015-5-29 14:30:07
 Profile: C:/WINDOWS/system32/spool/drivers/color/29.05.15-7000K-20-160cd.icc
 Measurement Device: eye-one display 2
 Software Version: blue eye pro 4.5.5 v0.0.0



Calibration:

	Target	Current	Deviation
Gamma	2.0	2.0	0%
Kelvin	7000	7010	0%
cd/m2	160	159	1%

DDC/CI was not used for calibration.

Whitepoint

XYZ	150.61	158.88	184.14
XYZ (normalized):	94.80	100.00	115.90
Luminance	158.9 Cd/m2		

Blackpoint:

Luminance 0.12 Cd/m2

Graybalance:

Color	Kelvin	Chroma	Gamma
0% black	13940	0.51	
17% heavy dark	7111	1.24	1.98
25% dark gray	6963	0.34	1.99
50% gray	6979	0.40	1.99
75% light gray	6950	0.46	1.98
100% white	7010	0.30	

Average Gamma = 1.98

Profile Statistic:

Note: The deltaE calculation takes the blackpoint into account!
Based on chromatic adaptation Bradford

Color	R	G	B	L	a	b	dE	dE94
0% black	0	0	0	0.7	-0.1	-0.5	0.1	0.1
17% heavy dark	45	45	45	21.3	-1.1	0.3	1.2	1.2
25% dark gray	64	64	64	30.4	0.4	-0.1	0.5	0.5
50% gray	128	128	128	57.2	0.6	-0.2	0.6	0.6
75% light gray	192	192	192	80.0	0.7	0.0	0.7	0.7
100% white	255	255	255	100.0	0.0	0.0	0.0	0.0
red	255	0	0	52.7	89.2	80.3	0.5	0.2
green	0	255	0	87.5	-82.5	99.5	2.1	0.8
blue	0	0	255	32.8	56.5	-110.9	0.7	0.4
cyan	0	255	255	91.1	-55.1	-14.7	0.5	0.3
magenta	255	0	255	60.1	96.2	-64.5	0.6	0.3
yellow	255	255	0	96.9	-13.9	113.2	2.0	0.4
pastell-red	170	85	85	49.9	37.4	16.3	1.0	0.5
pastell-green	85	170	85	66.1	-41.6	39.0	0.5	0.4
pastell-blue	85	85	170	43.8	16.5	-46.8	0.9	0.5
pastell-cyan	85	170	170	67.8	-28.8	-8.0	0.5	0.2
pastell-magenta	170	85	170	52.5	45.4	-32.2	0.2	0.1
pastell-yellow	170	170	85	71.2	-8.7	46.8	0.7	0.5
Average							0.7	0.4
Maximum							2.1	1.2

Metric:

	0%	50%	100%
X	0.1	38.1	150.6
Y	0.1	40.0	158.9
Z	0.2	46.5	184.1
K		6979	7010